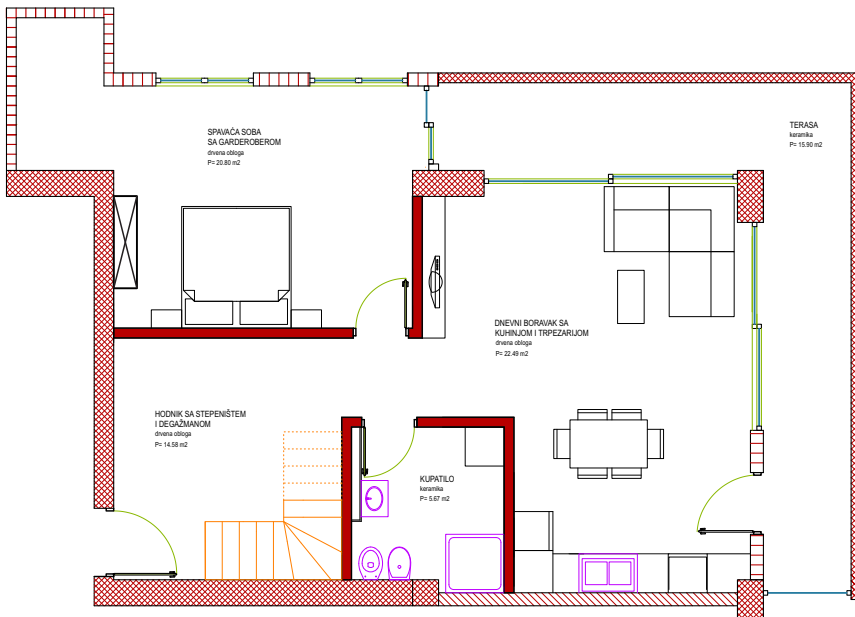


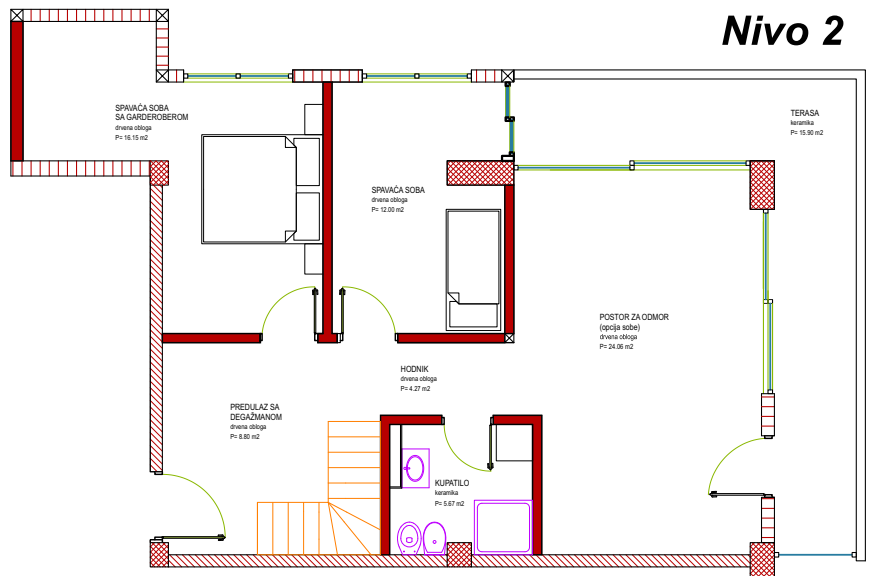


GRUNT.ba

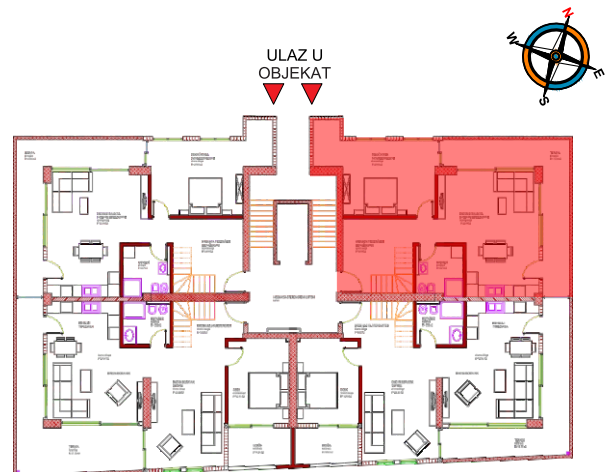
Nivo 1



Nivo 2



PentHouse br. 4		
<b>Nivo 1 (P=71,49m<sup>2</sup>)</b>		
1	Hodnik sa stepeništem i dega.	14,58 m <sup>2</sup>
2	D. boravak, kuhinja i trpezarija	22,49 m <sup>2</sup>
3	Spavaća soba sa garderoberom	20,80 m <sup>2</sup>
4	Kupatilo	5,67 m <sup>2</sup>
5	Terasa (15,90m <sup>2</sup> x 0,50)	7,95 m <sup>2</sup>
<b>Nivo 2 (P=78,90m<sup>2</sup>)</b>		
1	Predulaz sa degažmanom	8,80 m <sup>2</sup>
2	Hodnik	4,27 m <sup>2</sup>
3	Prostor za odmor	24,06 m <sup>2</sup>
4	Spavaća soba	12,00 m <sup>2</sup>
5	Spavaća soba sa garderoberom	16,15 m <sup>2</sup>
6	Kupatilo	5,67 m <sup>2</sup>
7	Terasa (15,90m <sup>2</sup> x 0,50)	7,95 m <sup>2</sup>
<b>UKUPNO netto korisna površina</b>		<b>150,39 m<sup>2</sup></b>



STAMBENO - POSLOVNI OBJEKT »TALIĆA BRDO« ZENICA