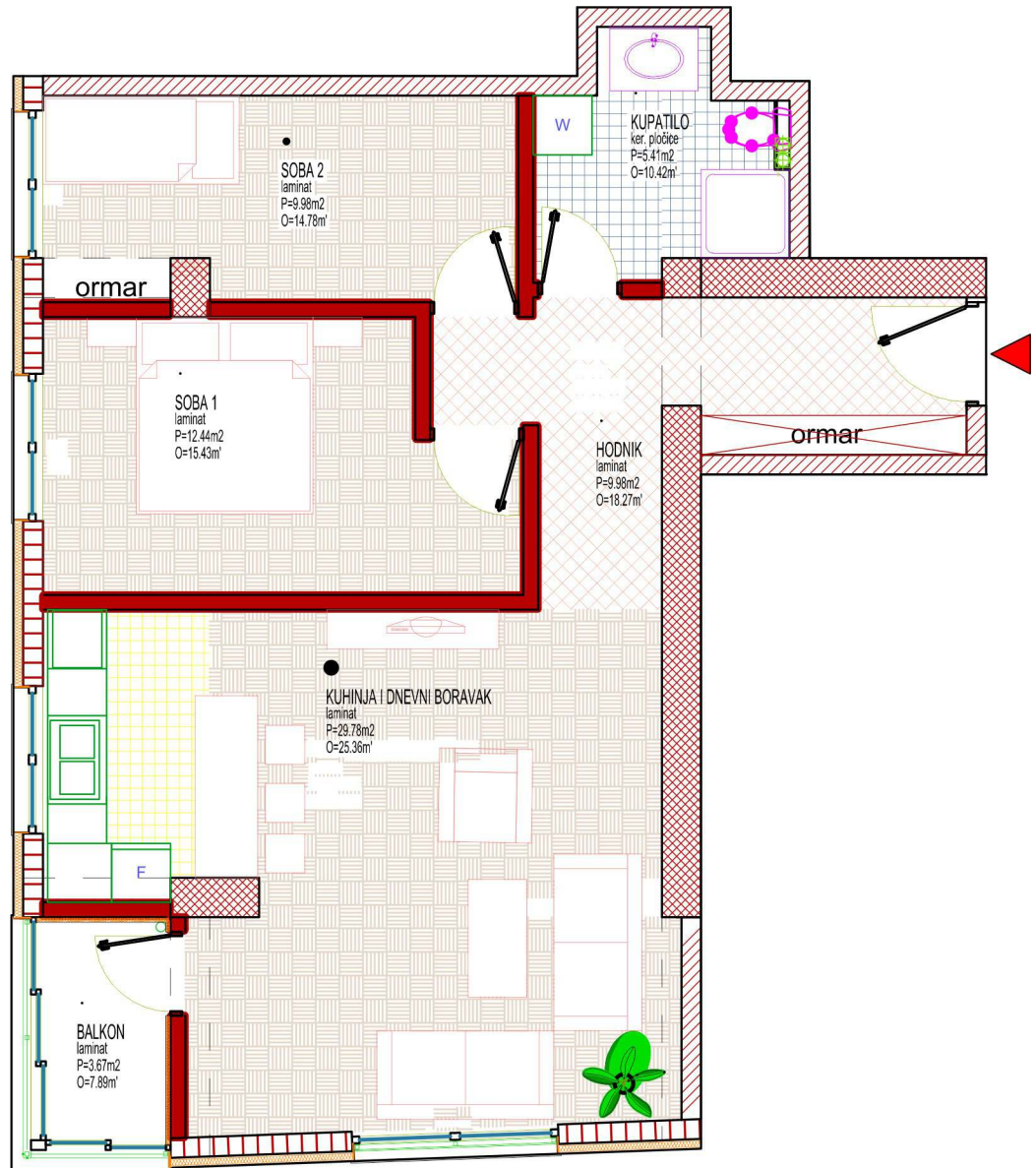
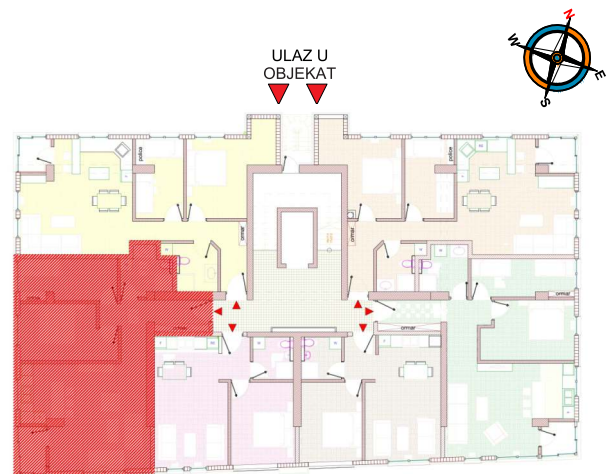




GRUNT.ba



Stambena jedinica br. 2 - sprat IV			
TROSOBAN STAN	1	Hodnik	9,98 m <sup>2</sup>
	2	Kupatilo	5,41 m <sup>2</sup>
	3	Soba 1	12,44 m <sup>2</sup>
	4	Soba 2	9,98 m <sup>2</sup>
	5	Dnevni boravak sa kuhinjom	29,78 m <sup>2</sup>
	6	Lođa (3,67m <sup>2</sup> )	2,75 m <sup>2</sup>
	<b>UKUPNO netto korisna površina</b>		<b>70,34 m<sup>2</sup></b>



STAMBENO-POSLOVNI OBJEKAT »TALIĆA BRDO« ZENICA