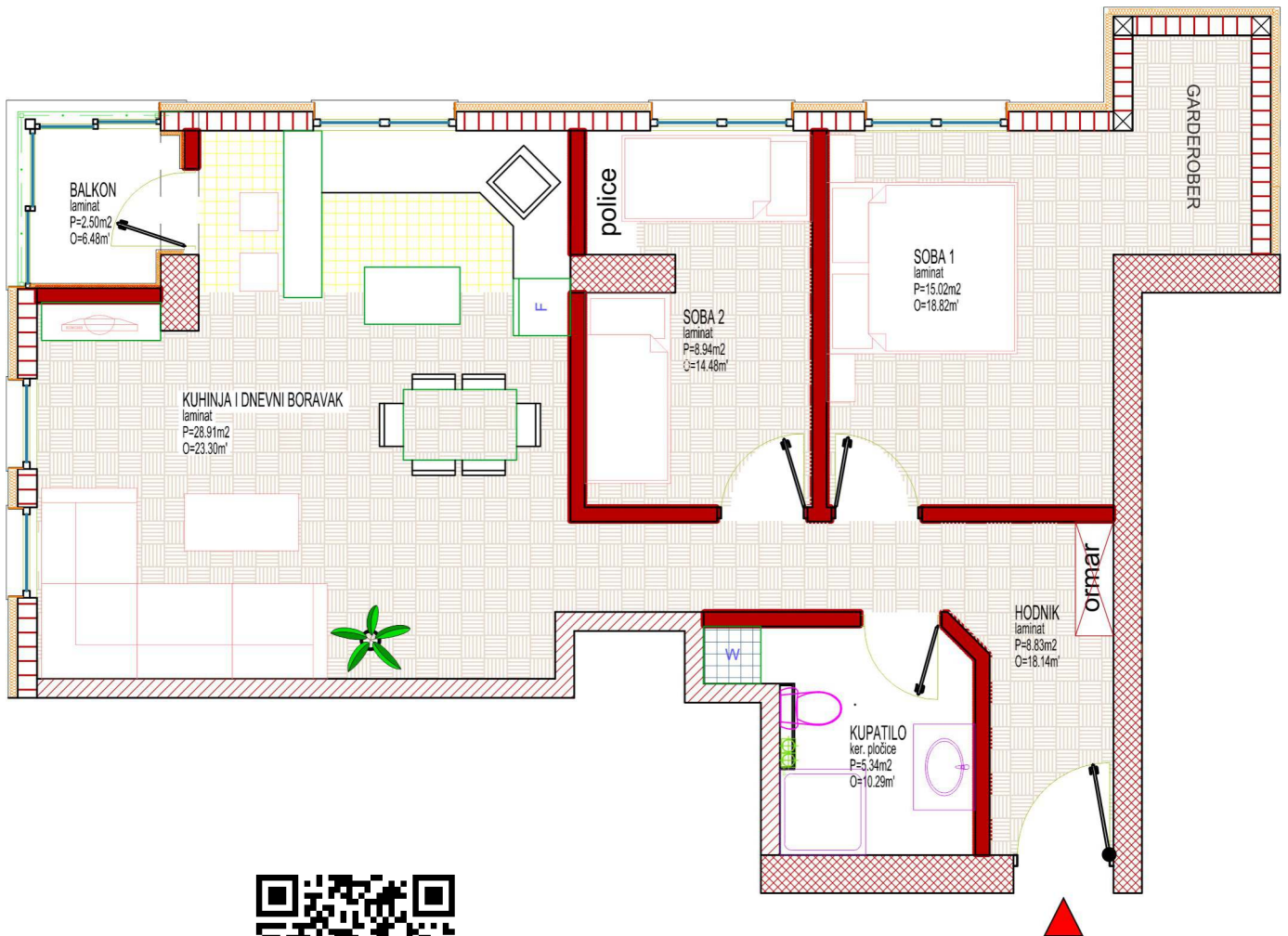
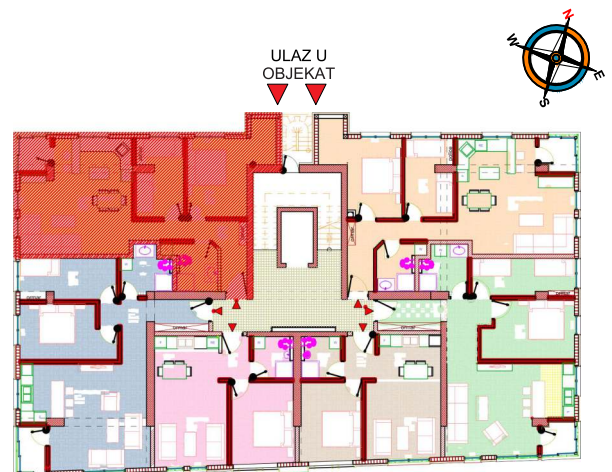




GRUNT.ba



Stambena jedinica br.1 - sprat VIII			
TROSOBAN STAN	1	Hodnik	8,83 m ²
	2	Kupatilo	5,34 m ²
	3	Soba 1	15,02 m ²
	4	Soba 2	8,94 m ²
	5	Dnevni boravak sa kuhinjom	28,91 m ²
	6	Lođa (2,50m ² x 0,75)	1,88 m ²
	UKUPNO netto korisna površina		68,92 m²



STAMBENO-POSLOVNI OBJEKAT »TALIĆA BRDO« ZENICA